

CSS List Builder User Guide



MENU

Installing CSS List Builder

Extension installer files come in 2 formats: MXP and ZXP. MXPs are supported by Extension Manager versions MX, MX2004, 8, CS3, CS4, CS5, CS5.5 and CS6. ZXP is supported by versions CS5.5 and higher. To install this product, open your Adobe Extension Manager, click the Install icon or link, and then browse to where you unzipped the installer file.

Dreamweaver CC 2015 (and higher) Extension Installation Information

As of CC 2015, Adobe has ceased to support its own Extension Manager. Use the PVII Extension Manager for Adobe Creative Cloud:

PVII Extension Manager for Adobe CC (Windows and Mac)

[Download and Install Instructions](#)

CSS List Builder Overview

The PVII Links Toolkit is a productivity tool that enables you to

CSS List Builder User Guide



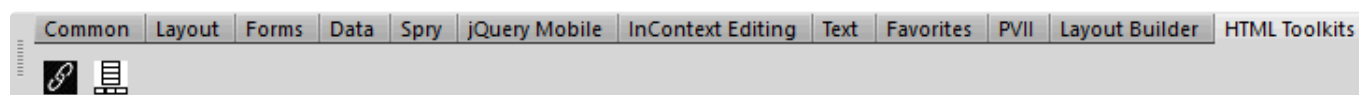
MENU

in an intuitive user interface, with absolutely no coding required. Choose foreground and background colors for any or all states (link, visited, & hover), as well as underlining, radius, glassy effect, and animation. Also set link path, target, and title—features that make the List Builder UI a one-stop destination for managing all of your links.

Accessing the CSS List Builder UI

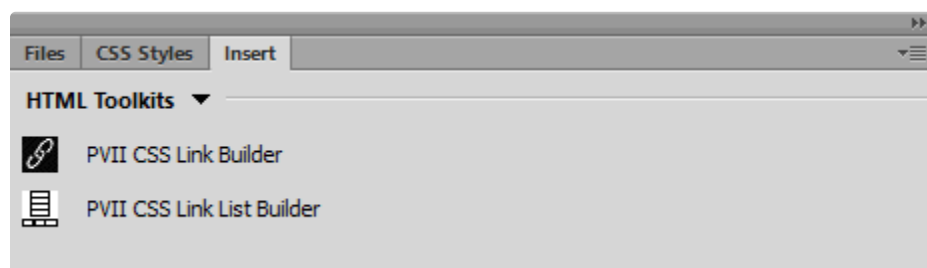
Installing the Links Toolkit creates a new category on your Insert Bar/Panel called **HTML Toolkits** (the last category in the screen captures below):

Insert Bar



The HTML Toolkit tab's second icon opens the **CSS List Builder UI**. The first icon opens the **CSS Link Builder UI**.

Insert Panel

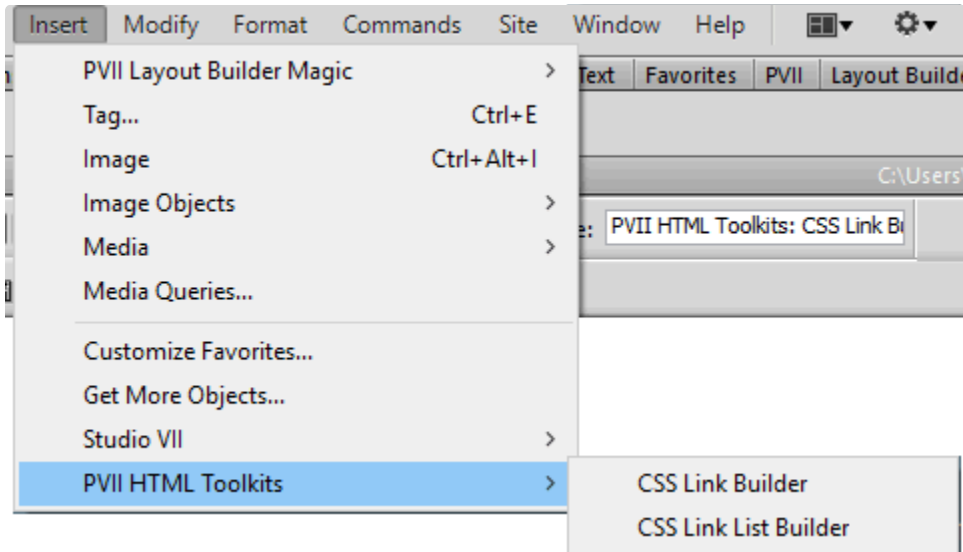


CSS List Builder User Guide



MENU

Insert > PVII HTML Toolkits > CSS List Builder



The interface will open...

The CSS Link Builder UI

CSS List Builder User Guide



MENU

The screenshot shows the CSS List Builder interface. At the top, there are four buttons: "Add Item", "Delete Item", "Move Up", and "Move Down". To the right is a "Help" button. Below these is a "List Items:" section containing a list box with three items: "Meet the Team", "Technicians", and "Customer Service". Below the list box is an "Item Text" input field containing "Meet the Team". Below that is an "Item Link" input field containing "team.htm" and a "Browse..." button. Below the link field are "Title:" and "Target:" input fields. Below these are three rows of color selection dropdowns: "Text Color" (White), "Hover" (White), "Visited" (None); "Background Color" (Black), "Hover" (Red), "Visited" (None). Below the color dropdowns are four styling options: "Border" (Dark), "Rounded" (checked), "Glassy" (checked), and "Animation" (checked). At the bottom is a "User Class:" input field.

Mode

There are 2 modes: **Insert New CSS Link List** and **Modify Existing CSS Link List**

Orientation

Choose **Horizontal** or **Vertical**

List Item Command Buttons

Manage your Link List using the Command buttons atop the list to **Add Item**, **Delete Item**, **Move Up**, or **Move Down**.

CSS List Builder User Guide



MENU

Command buttons above the list to add, delete, or move items.

Item Text

Enter or Edit the text for your button.

Item Link

Enter or **Browse** to the page that you wish to load when your button is clicked or tapped.

Title

Optionally enter a title for your link. Modern browsers will pop up your title in a tooltip. Typically, titles are used when the link text does not describe the link destination in sufficient detail.

The title attribute should be used for accessibility rather than for SEO

Color & Decoration Options

The color & decoration options are straightforward and self-explanatory. **Do note that your color and decoration options will apply to each link in your list.**

CSS List Builder User Guide



MENU

The first 2 rows (**Text Color** and **Background Color**) have 3 columns. The first column describes the **default** link state, the second column is for the **hover** state, and the third column is for the **visited** state.

Note: We do not provide an Active selector as that state is rarely actually needed for links in modern web pages.

Text Color

Set Text Color for the default, Hover, and Visited states of each link in your list.

Background Color

Set Background Color for the default, Hover, and Visited states of each link in your list.

Text Decoration

Set bottom border attributes for the default and Hover states of each link in your list. The Visited state will inherit the default

Styling Options

CSS List Builder User Guide



MENU

Border

The Border option enables you to wrap each of your links in a light or dark border.

Rounded

The Rounded option sets a subtle border-radius on your links.

Glassy

The Glassy option sets a glass effect on your links, making it appear wet or beveled.

Animation

Sets a subtle transition from default to hover states.

User Class

Advanced CSS Authors can set one or more custom classes on the list, enabling them to set attributes and behaviors beyond the available UI options.

Note: Do not enter a leading period in the User Class box. If you are entering multiple classes, separate each one with a space. Do not use the characters **p7** or **tkl** in your user class names. Note that for a Link List, the User Class is assigned to the parent UL, as opposed to individual links. Do keep that in mind as you write your relevant CSS

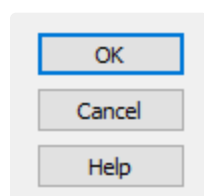
CSS List Builder User Guide



MENU

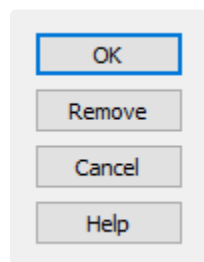
When entering a new link

A three-button column will display:



When Modifying an Existing Link

A fourth button labeled Remove will be appear:



OK

Commit the options you have set in your UI session to the page and close the UI.

Remove (only present in Modify Mode UI)

Removes the entire list, text included. If this was the only List Builder managed list on your page, the List Builder CSS file link will also be removed. A warning will pop up explaining what will be removed. Read it carefully before you commit to the Remove action.

CSS List Builder User Guide



MENU

Are you sure you want to Remove?

OK

Cancel

Cancel

Discard the options you have set in your UI session and close the UI. Nothing on the page will be changed.

Help

Load this User Guide in your default browser.

Note: Requires a live Internet connection.

Support Options

Before making a support inquiry, please be certain to have read the documentation that came with your product. Please include your **Order Number**, Dreamweaver version, as well as your computer operating system type in all support correspondence.

Support Forum

PVII maintains a Web Forum community. Go Direct to the Web

CSS List Builder User Guide



MENU

Let Us Help You With Your Support

E-Mail: support@projectseven.com

Phone: (336) 374-4611

Phone hours are 9:00am - 5:00pm Eastern Time U.S.

©2018 Project Seven Development